

Manual Instal Slackware 13.0.0.0

Michael Daranto – www.slackbox.com

05-January-2010

Diperbolehkan untuk menggandakan, mengedit, menambah, dan mengurangi sesuai selera (Jika dirasa berguna).



1. BOOT by CD/DVD Slackware

- Masukkan CD/DVD Slackware dan boot.
- Jika tidak muncul tulisan di bawah, mungkin urutan boot perlu diubah (CDROM terlebih dahulu baru hardisk)

```
ISOLINUX 3.52 2007-09-25 Copyright (C) 1994-2007 H. Peter Anvin
```

```
Welcome to Slackware version 13.0 (Linux kernel 2.6.29.6)!
```

```
If you need to pass extra parameters to the kernel, enter them at the prompt below after the name of the kernel to boot (huge.s etc). NOTE: If your machine is not at least a Pentium-Pro, you *must* boot and install with the huge.s kernel, not the hugesmp.s kernel! For older machines, use "huge.s" at the boot prompt.
```

```
In a pinch, you can boot your system from here with a command like:
```

```
boot: hugesmp.s root=/dev/hda1 rdinit= ro
```

```
In the example above, /dev/hda1 is the / Linux partition.
```

```
This prompt is just for entering extra parameters. If you don't need to enter any parameters, hit ENTER to boot the default kernel "hugesmp.s" or press [F2] for a listing of more kernel choices.
```

```
boot: _
```

Dalam instalasi standart, tekan Enter.

```
If you are not using a US keyboard, you may now load a different keyboard map. To select a different keyboard map, please enter 1 now. To continue using the US map, just hit enter.
```

```
Enter 1 to select a keyboard map: _
```

Enter saja untuk keyboard map. Default US keyboard yang umum dipasaran.

```
Welcome to the Slackware Linux installation disk! (version 13.0)
```

```
##### IMPORTANT! READ THE INFORMATION BELOW CAREFULLY. #####
```

```
- You will need one or more partitions of type 'Linux' prepared. It is also recommended that you create a swap partition (type 'Linux swap') prior to installation. For more information, run 'setup' and read the help file.
```

```
- If you're having problems that you think might be related to low memory (this is possible on machines with 64 or less megabytes of system memory), you can try activating a swap partition before you run setup. After making a swap partition (type 8Z) with cfdisk or fdisk, activate it like this:  
mkswap /dev/<partition> ; swapon /dev/<partition>
```

```
- Once you have prepared the disk partitions for Linux, type 'setup' to begin the installation process.
```

```
- If you do not have a color monitor, type: TERM=vt100 before you start 'setup'.
```

```
You may now login as 'root'.
```

```
slackware login: root_
```

Masukkan Slackware login : **root**

2. PARTISI by CFDISK

Buat partisi dengan mengetikkan #cfdisk

Catatan : Jika hardisk Anda SATA → #cfdisk /dev/sda

Jika ada dua hardisk SATA dan target Anda hardisk ke-2 → #cfdisk /dev/sdb

```

cfdisk (util-linux-ng 2.14.2)

Disk Drive: /dev/hda
Size: 6721372160 bytes, 6721 MB
Heads: 16 Sectors per Track: 63 Cylinders: 13023

-----
Name      Flags      Part Type  FS Type    [Label]    Size (MB)
-----
Pri/Log   Free Space                6721.12
-----
```

```

[ Help ] [ New ] [ Print ] [ Quit ] [ Units ]
[ Write ]

Print help screen
```

Dalam contoh di atas, hardisk yang digunakan ATA (menggunakan pita lebar kabel paralel pada hardisk). Dalam pembuatan manual ini, saya menggunakan hardisk virtual machine :) Anda mungkin ingin memulai dari **New**.

Bagian ini merupakan bagian yang musti dicoba sendiri dan perlu latihan :) Biasakan berlatih... ! Jangan khawatir, sebelum Anda mengetikkan **yes** Anda dapat bereksperimen sepuas hati. Jangan lupa untuk membuat satu **partisi swap** (82) pada susunan partisi yang ada. Tidak ada patokan pasti mengenai besarnya swap. Secara umum ukuran swap 2x ukuran RAM.

```

cfdisk (util-linux-ng 2.14.2)

Disk Drive: /dev/hda
Size: 6721372160 bytes, 6721 MB
Heads: 16 Sectors per Track: 63 Cylinders: 13023

-----
Name      Flags      Part Type  FS Type    [Label]    Size (MB)
-----
hda1     Primary   Linux      6000.14
hda2     Primary   Linux swap 720.99
-----
```

```

Are you sure you want to write the partition table to disk? (yes or no): _
Warning!! This may destroy data on your disk!
```

Saya membuat 2 partisi dalam kasus di atas. Jika Anda masih baru memulai, 2 partisi sudah cukup. Partisi root system dan swap. Jika ingin lebih, anjuran saya buat satu untuk /home.

Mungkin Anda perlu men-draft keperluan partisi sebelum melakoni #cfdisk

Sebagai anjuran, jika Sudah ada file system lain (mungkin Ms Windows) pada hardisk, BACKUP lebih dulu data Anda. Jika proses cfdisk telah dieksekusi, maka data pada partisi akan dihancurkan :)

01 FAT12	4F QNX4.x 3rd part	A8 Darwin UFS
02 XENIX root	50 OnTrack DM	A9 NetBSD
03 XENIX usr	51 OnTrack DM6 Aux1	AB Darwin boot
04 FAT16 <32M	52 CP/M	B7 BSDI fs
05 Extended	53 OnTrack DM6 Aux3	B8 BSDI swap
06 FAT16	54 OnTrackDM6	BB Boot Wizard hidden
07 HPFS/NTFS	55 EZ-Drive	BE Solaris boot
08 AIX	56 Golden Bow	BF Solaris
09 AIX bootable	5C Priam Edisk	C1 DRDOS/sec (FAT-12)
0A OS/2 Boot Manager	61 SpeedStor	C4 DRDOS/sec (FAT-16 <
0B W95 FAT32	63 GNU HURD or SysU	C6 DRDOS/sec (FAT-16)
0C W95 FAT32 (LBA)	64 Novell Netware 286	C7 Syrix
0E W95 FAT16 (LBA)	65 Novell Netware 386	DA Non-FS data
0F W95 Ext'd (LBA)	70 DiskSecure Multi-Boo	DB CP/M / CTOS / ...
10 OPUS	75 PC/IX	DE Bell Utility
11 Hidden FAT12	80 Old Minix	DF BootIt
12 Compaq diagnostics	81 Minix / old Linux	E1 DOS access
14 Hidden FAT16 <32M	82 Linux swap	E3 DOS R/O
16 Hidden FAT16	83 Linux	E4 SpeedStor

Press a key to continue_

17 Hidden HPFS/NTFS	84 OS/2 hidden C: drive	EB BeOS fs
18 AST SmartSleep	85 Linux extended	EE GPT
1B Hidden W95 FAT32	86 NTFS volume set	EF EFI (FAT-12/16/32)
1C Hidden W95 FAT32 (LB	87 NTFS volume set	F0 Linux/Pa-RISC boot
1E Hidden W95 FAT16 (LB	88 Linux plaintext	F1 SpeedStor
24 NEC DOS	8E Linux LDM	F4 SpeedStor
39 Plan 9	93 Amoeba	F2 DOS secondary
3C PartitionMagic recov	94 Amoeba BBT	FB UMware UMFS
40 Venix 00286	9F BSD/OS	FC UMware UMKCORE
41 PPC PreP Boot	A0 IBM Thinkpad hiberna	FD Linux raid autodetec
42 SFS	A5 FreeBSD	FE LANstep
4D QNX4.x	A6 OpenBSD	FF BBT
4E QNX4.x 2nd part	A7 NeXTSTEP	

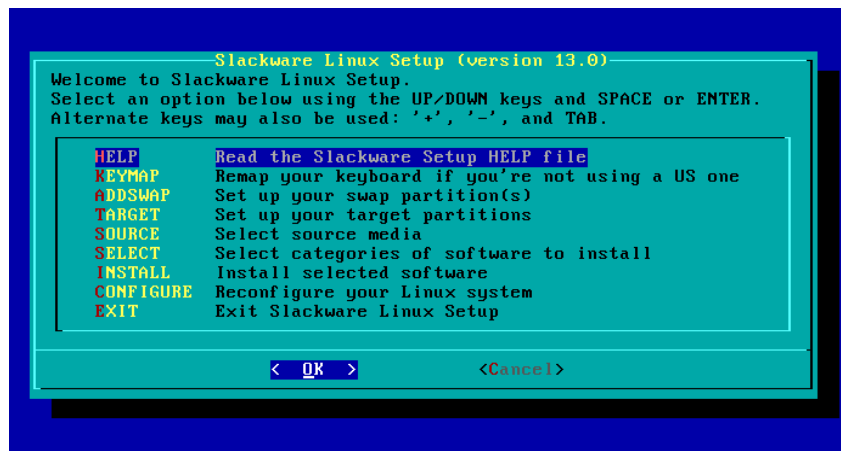
Enter filesystem type: 82

Banyak pilihan **type** buat partisi. Jika ingin memilih swap, pilih no 82. Pilihan 82 sudah default jika Anda menekan Enter terus. Jika sudah yakin, **save** dan ketik **yes**. Keluar dari cfdisk (quit) dan Anda akan kembali ke #.

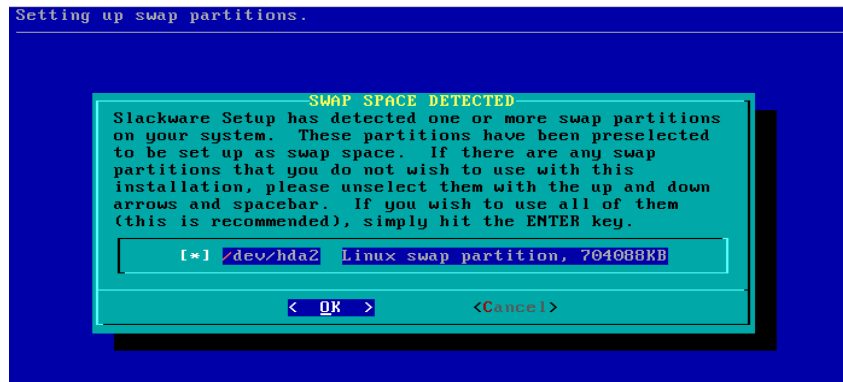
3. SETUP

Ketik #setup

ADD SWAP

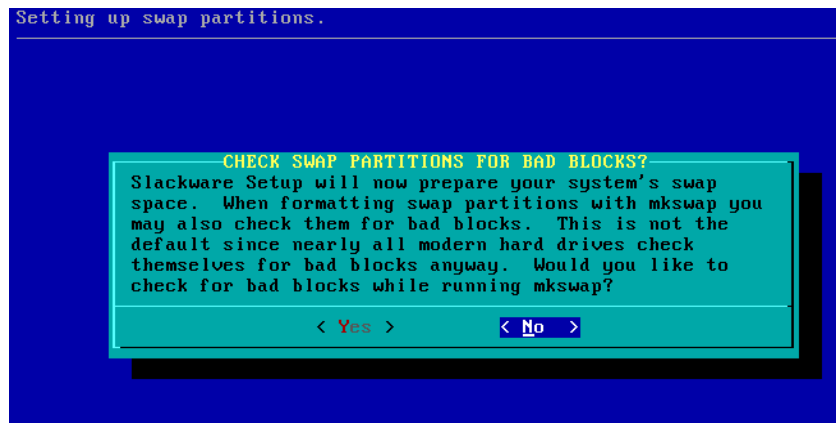


Pilih ADDSWAP

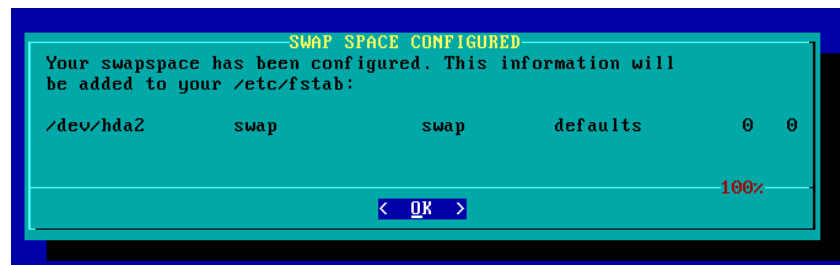


Jika proses pembuatan partisi swap Anda berhasil, maka akan terdeteksi. OK.

CHECK SWAP

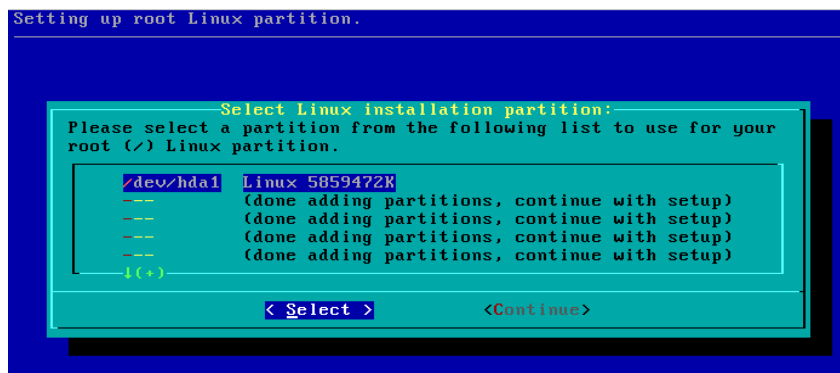


Kali ini pilihan Yes atau No terserah Anda :)



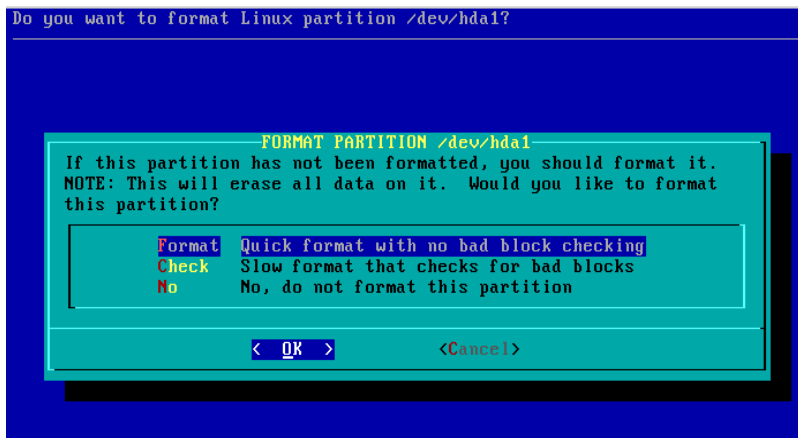
OK !

Root partition



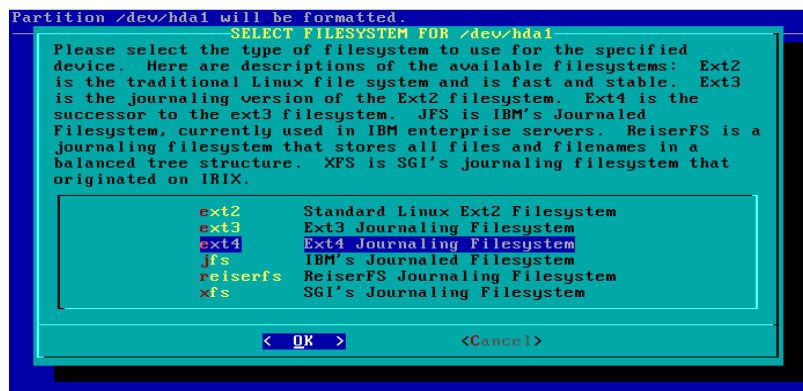
Pilih partisi untuk system root /

FORMAT



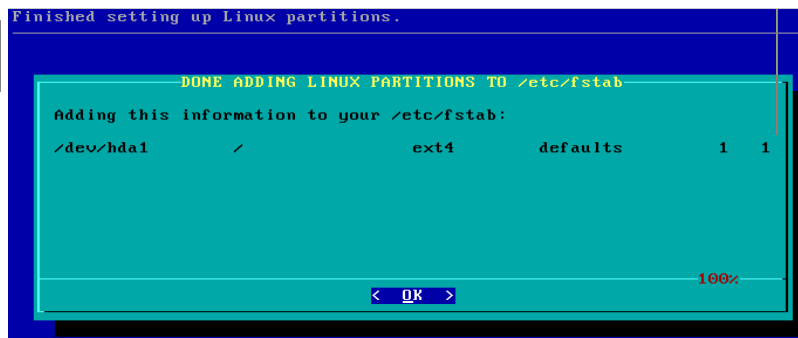
Pilih Format atau Check. Jika hardisk yang dipakai sudah 'tua' lebih baik pilih check.

FILESYSTEM



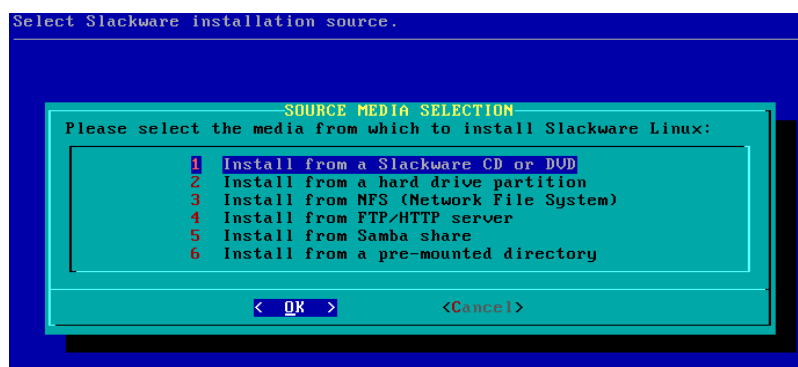
Pilih file system. Standart untuk Slackware 13.0 adalah Ext4.

ADD to /etc/fstab

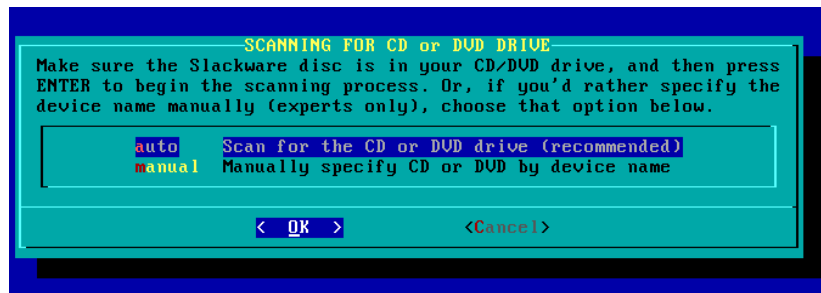


OK !

INSTALATION

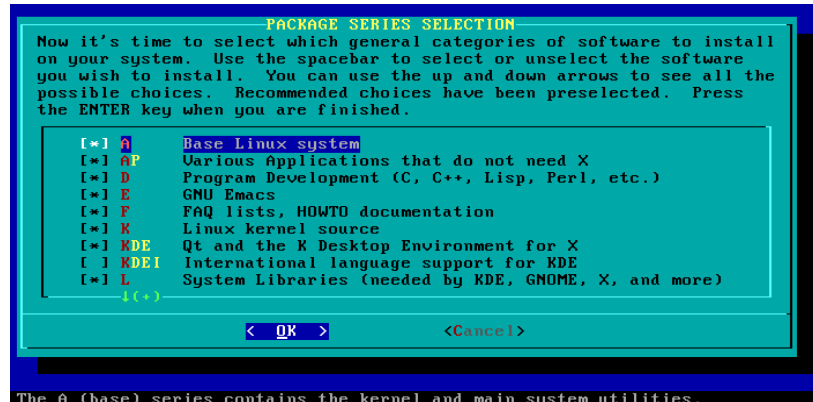


Pilih Install dari CD/DVD



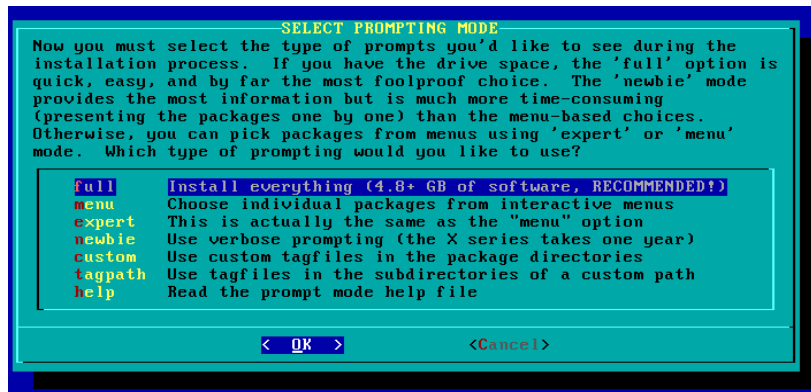
Pilih Auto.

PACKAGES



Pilihan paket yang akan di install. Biarkan standart.

FULL INSTALL



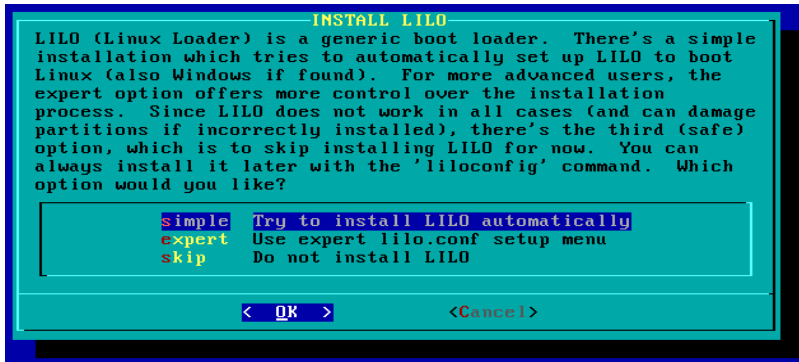
Pilih Full untuk menginstall semua. (dianjurkan)

FLASH BOOT



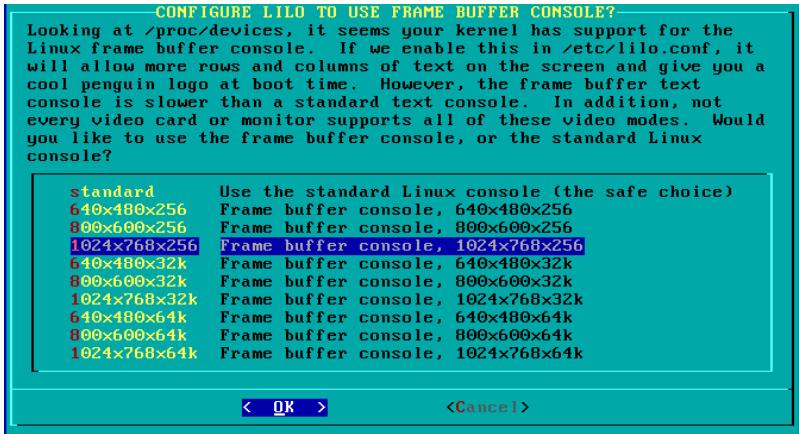
Ingin media boot darurat dari flashdisk ? Jika tidak pilih Skip.

LILO

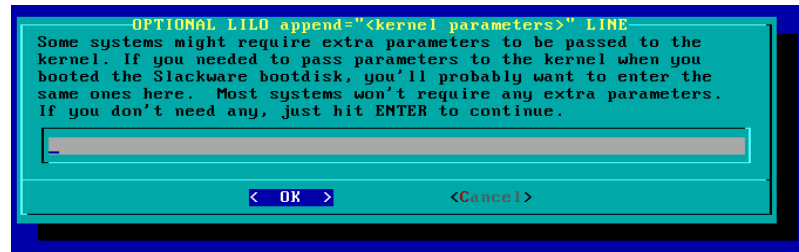


Pilih **Simple** untuk install LILO:)

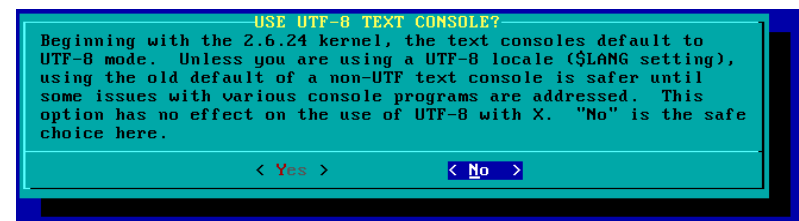
FRAME BUFFER



OK saja untuk resolusi 1024x768x256



Kosongkan saja.



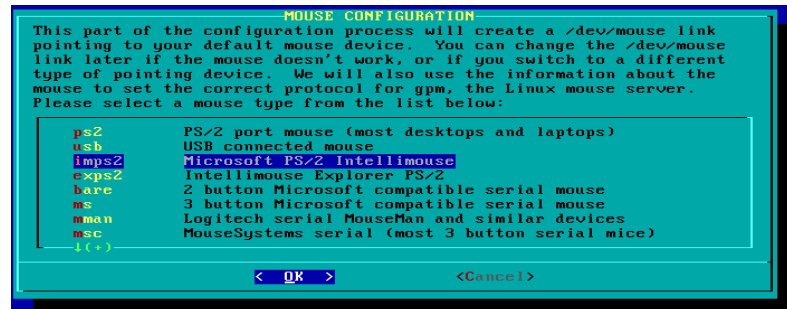
Pilih No saja.

LILO DEST



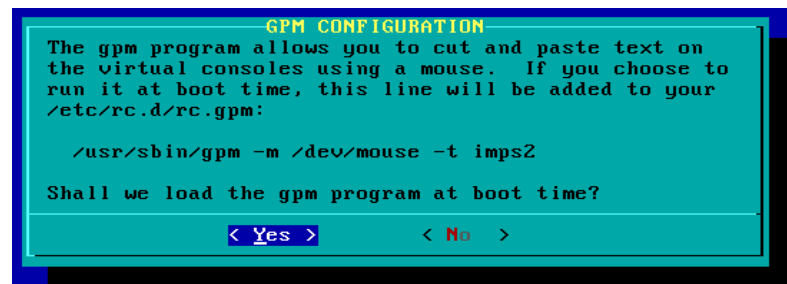
Pilih MBR . Maka kontrol boot dilakukan oleh LILO.

MOUSE



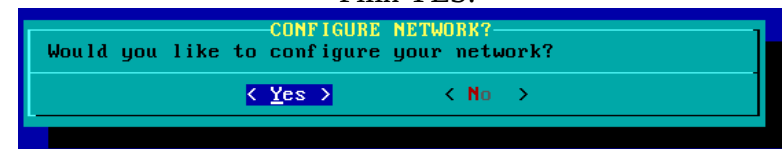
Standart IMPS2.

GPM



Pilih YES.

NETWORKING



Jika terhubung ke jaringan atau Internet, pilih Yes.

HOSTNAME



Isi Hostname favorit Anda.

DOMAIN

```
ENTER DOMAINNAME FOR 'warungkopi'
Now, we need the domain name for this machine, such as:
example.org

Do not supply a leading '.'

Enter domain name for warungkopi:
tegal_

< OK >      <Cancel>
```

Isi dengan domain favorit Anda.

DHCP

```
SETUP IP ADDRESS FOR 'warungkopi.tegal'
Now we need to know how your machine connects to the network.
If you have an internal network card and an assigned IP address,
gateway, and DNS, use the 'static IP' choice to enter these
values. If your IP address is assigned by a DHCP server (commonly
used by cable modem and DSL services), select 'DHCP'. If you do
not have a network card, select the 'loopback' choice. 'loopback'
is also the correct choice if your only connection to the network
will be through a serial modem (with SLIP or PPP), or if you are
using a laptop network card (these are configured in
/etc/pcmcia/). What type of network connection best describes your
machine?

static IP  Use a static IP address to configure ethernet
DHCP      Use a DHCP server to configure ethernet
loopback  Set up a loopback connection (modem or no net)

< OK >      <Cancel>
```

Pilih DHCP jika tidak ingin repot.

```
SET DHCP HOSTNAME
Some network providers require that the DHCP hostname be
set in order to connect. If so, they'll have assigned a
hostname to your machine, which may look something like
CC-NUMBER-A (this depends on your ISP). If you were
assigned a DHCP hostname, please enter it below. If you
do not have a DHCP hostname, just hit ENTER or Cancel.

_

< OK >      <Cancel>
```

Kosongkan saja.

```
CONFIRM SETUP COMPLETE
Your networking system is now configured to use DHCP:

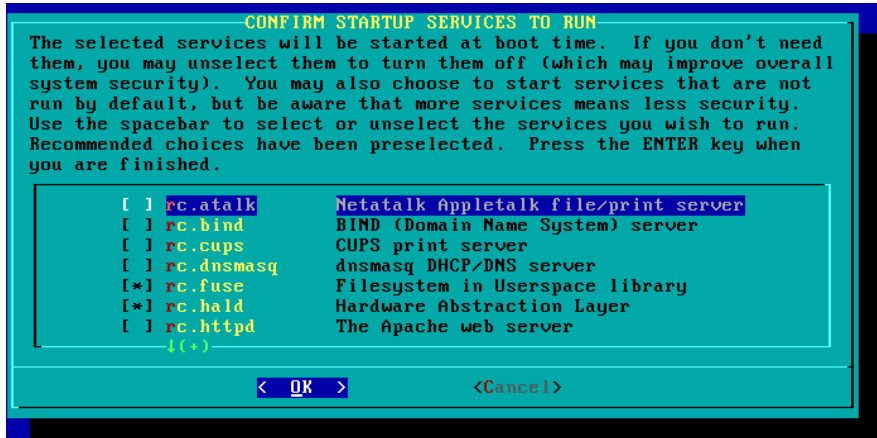
Hostname: warungkopi
Domain name: tegal
IP address: (use DHCP server)
Netmask: (use DHCP server)
Gateway: (use DHCP server)
Nameserver: (use DHCP server)

Is this correct? Press 'Yes' to continue, or 'No' to reconfigure.

< Yes >      < No >
```

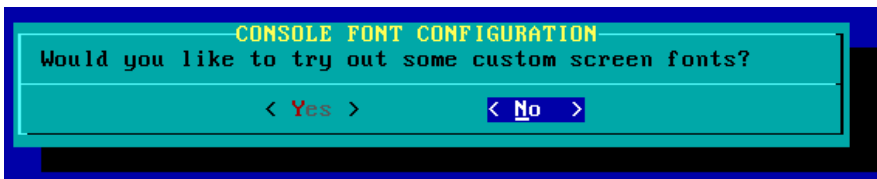
Jika sudah benar, pilih Yes.

STARTUP



Biarkan standart saja. Mungkin perlu tambahan rc.cups untuk printer Anda ??

FONT



Pilih No.

CLOCK



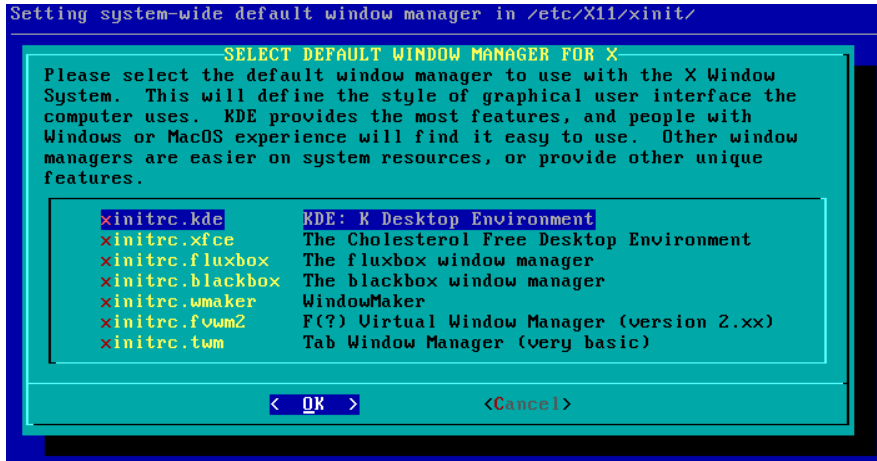
Pilih No.

TIMEZONE



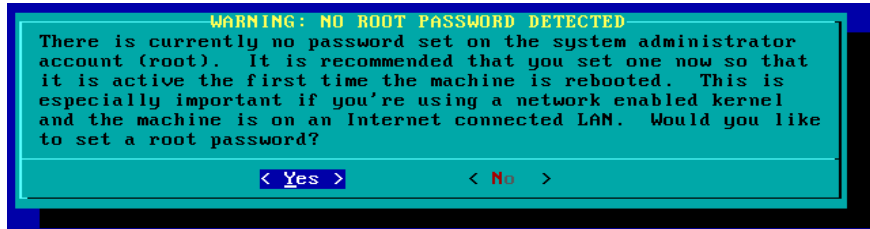
Pilih Asia/Jakarta... atau Asia Jayapura untuk timezone Anda.

DESKTOP M



Pilih default kde.

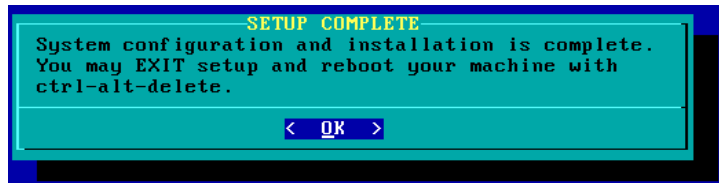
ROOT PASS



Lha kalau ini musti Yes.

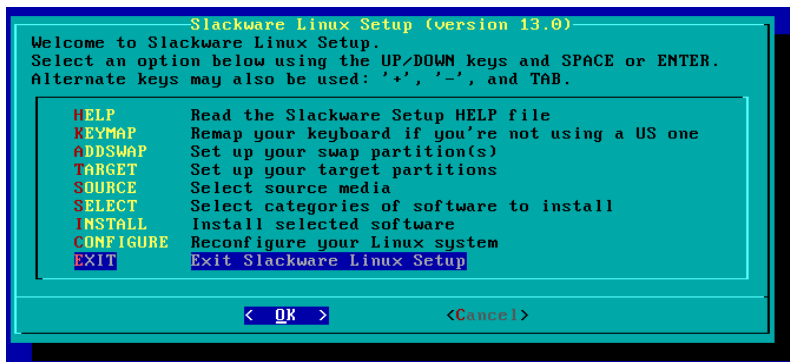
```
Changing password for root
Enter the new password (minimum of 5, maximum of 127 characters)
Please use a combination of upper and lower case letters and numbers.
New password: _____
```

Isikan password root Anda. Tidak ada bintang atau bulatan yang muncul saat Anda mengetik password.



Oke... instalasi sudah komplit.

EXIT



Pilih Exit dan siap untuk boot.

```
Installation of Slackware Linux is complete.
Please remove the installation disc and press ctrl-alt-delete to reboot.
root@slackware:/#
```

Semoga Sukses !!